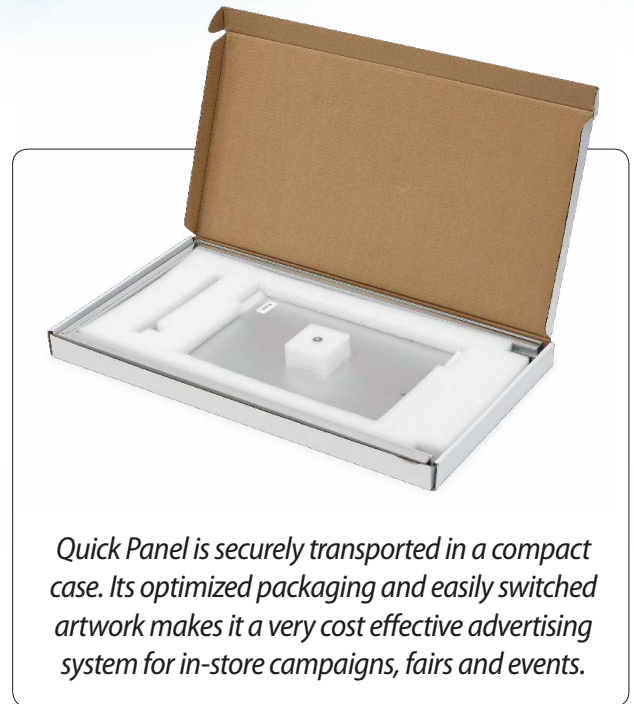
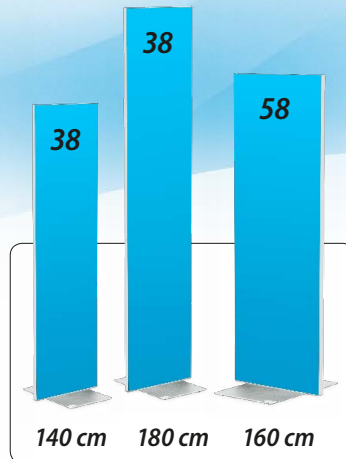


# Quick Panel

- **Easy panel switching**
- **Double sided**
- **Compact packaging**
- **Stylish framing**

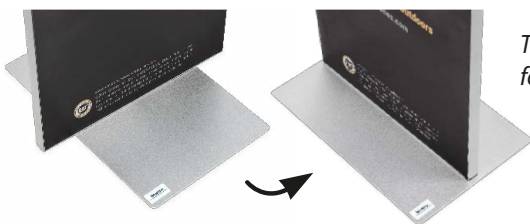


Quick Panel is securely transported in a compact case. Its optimized packaging and easily switched artwork makes it a very cost effective advertising system for in-store campaigns, fairs and events.

## An exclusive display system

Quick Panel's elegant design gives your brand an exclusive framing. It is also one of the most compact and easy-to-use display systems on the market. Despite its impressive size when assembled the packaging is minimal, which reduces transportation costs and storage volume. Setup only takes a minute and no tools are required.

Switching panels only takes an instant and the panels can be re-used over and over again. The display system's base is adjustable for increased stability. The standard height is 140 cm and can be increased to 160 cm or 180 cm with extra profile extensions.



The base can be adjusted for increased stability.

### Specifications

Quick Panel	38	58
Width	38 cm	58 cm
Height	140 cm / 160 cm / 180 cm	
Depth (base)	26 or 40 cm	
Weight incl package	3,5 kg	4,0 kg
Artwork width	38 cm	58 cm
Artwork height	140 cm / 160 cm / 180 cm	
Artwork media	Panels with magnet strips	
Components	Aluminium, steel	



Templates, images & info at [blickpunkt.se](http://blickpunkt.se)



Smart products for events, fairs, sports & retail